



Ibbett Lane, Potton, SG19 2QU
£375,000

 4  3  1  C

LATCHAM ———
————— DOWLING

ESTATE AGENTS

Latcham Dowling are delighted to offer for sale this four doubled bedroomed home situated within a popular development on the Western edge of Potton.

Now, having lived on this development for nearly 20 years myself, I can vouch for the great family accommodation it offers at 1300 sq ft. There are wardrobes to three of the four bedrooms, something you don't always find these days and a real bonus with a growing family is the fact you won't be queuing for the bathroom. There are two En Suites as well as the family bathroom plus a cloakroom on the ground floor.

There is a good sized Kitchen./Breakfast room to the front of the property with a lounge that stretches the whole width of the house to the rear and giving direct access to the garden via double French doors. The cloakroom completes the ground floor.

The first floor has bedroom two with its En Suite, two further double bedrooms and the family bathroom.

The second floor has the master bedroom which at 14'8 x 12'7 is a great size and also with an En Suite and two double wardrobes really is a great room.

The garden is a suntrap being South facing and a real bonus is the single pitched roof garage with parking in front of for three cars.

Now another real bonus is the fact it is CHAIN FREE and waiting for its next owner.

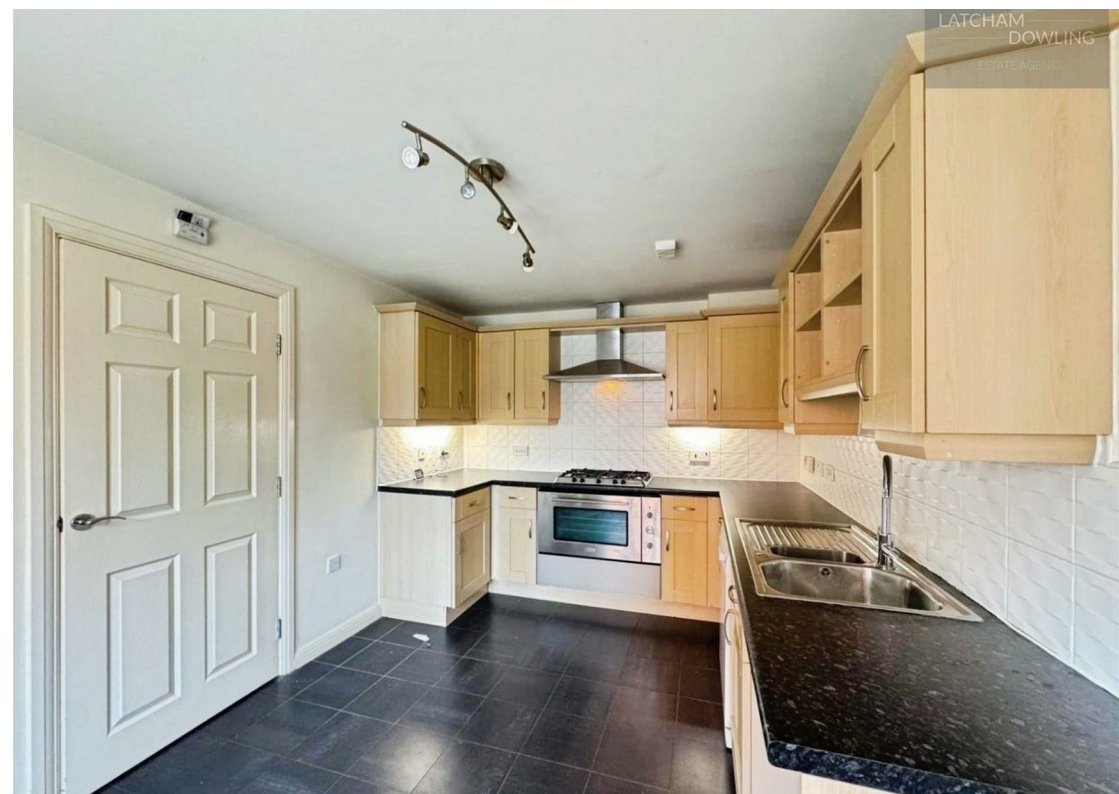
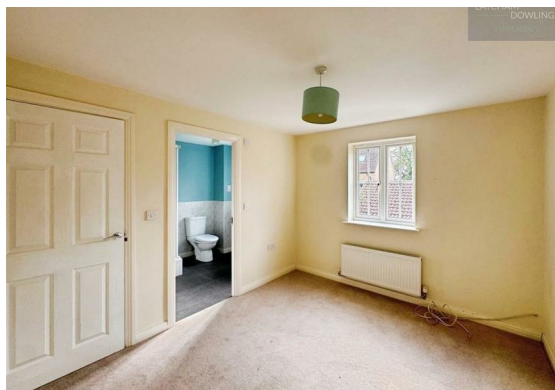
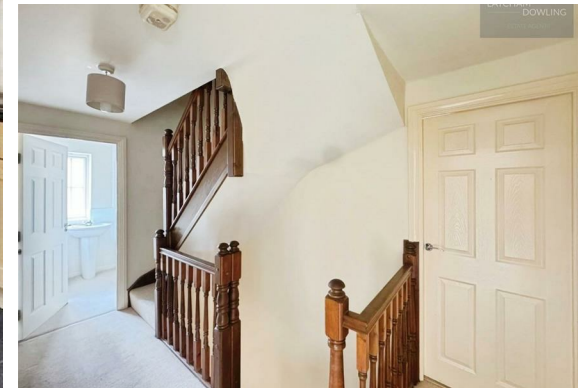
Potton is a market town with many amenities; It has a school, pre-schools, a doctors' surgery, butchers, hardware store, various eateries, a newsagent, two vets and so much more. In addition, Sandy and Biggleswade are within a 3 and 4-mile drive respectively, both offer mainline train stations to London St Pancras.

Also being on the Western edge of the Town, you have easy access to Deepdale with its beautiful walks and the Walk in Café for a coffee stop.

The property is presented in good condition and really needs to be viewed internally to be fully appreciated.

Entrance

Entrance Hall





W.c

Kitchen/Breakfast Room
15'3 x 9'3 (4.65m x 2.82m)

Lounge
16'3 x 11'7 (4.95m x 3.53m)

First Floor

Landing

Bedroom Two
11'2 x 8'5 (3.40m x 2.57m)

En Suite

Bedroom Three
12'3 x 7'10 (3.73m x 2.39m)

Bedroom Four
10'5 x 9'4 (3.18m x 2.84m)

Family Bathroom

Second floor

Second floor landing

Bedroom One
14'8 x 12'7 (4.47m x 3.84m)

En Suite

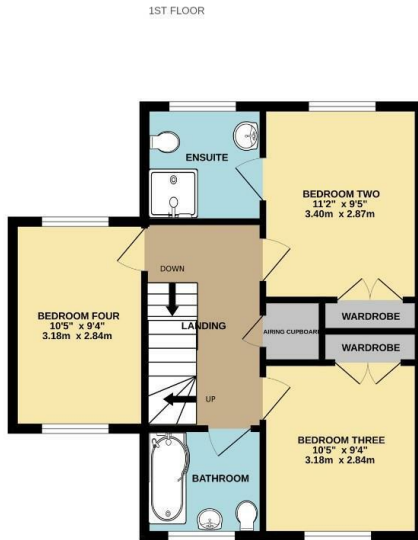
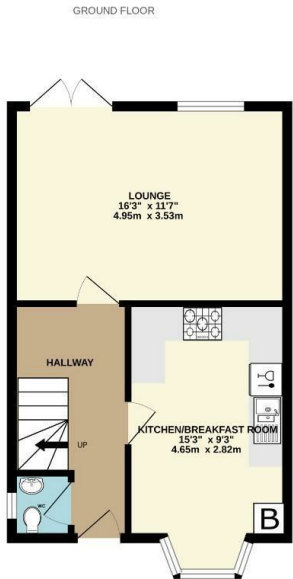
Outside

Rear Garden

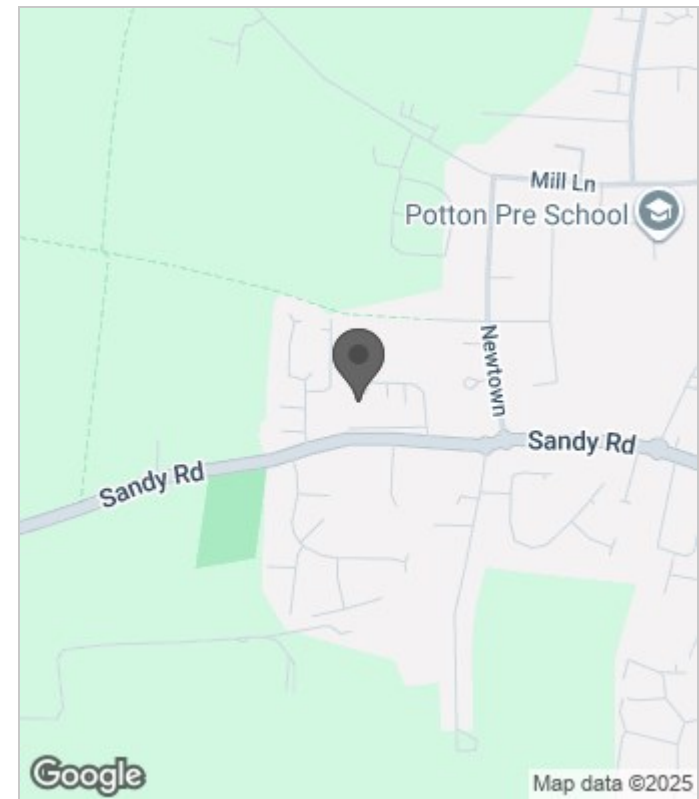
Front Garden

Garage

Parking



Whilst every attempt has been made to ensure the accuracy of the floorplan contained here, measurements of doors, windows, rooms and any other items are approximate and no responsibility is taken for any error, omission or mis-statement. This plan is for illustrative purposes only and should be used as such by any prospective purchaser. The services, systems and appliances shown have not been tested and no guarantee as to their operability or efficiency can be given.
Made with Metropix ©2025



Energy Efficiency Rating		
	Current	Potential
Very energy efficient - lower running costs		
(92 plus) A		
(81-91) B		84
(69-80) C	75	
(55-68) D		
(39-54) E		
(21-38) F		
(1-20) G		
Not energy efficient - higher running costs		
England & Wales	EU Directive 2002/91/EC	

These particulars, whilst believed to be accurate are set out as a general outline only for guidance and do not constitute any part of an offer or contract. Intending purchasers should not rely on them as statements of representation of fact, but must satisfy themselves by inspection or otherwise as to their accuracy. No person in this firms employment has the authority to make or give any representation or warranty in respect of the property.